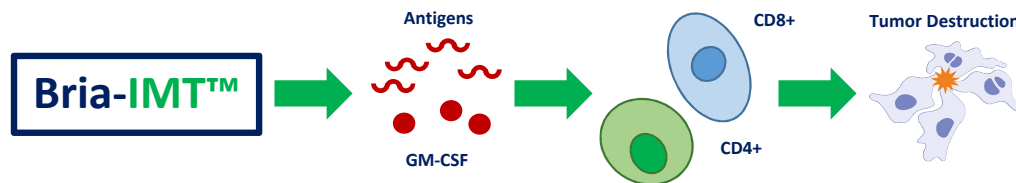


Corporate Highlights:

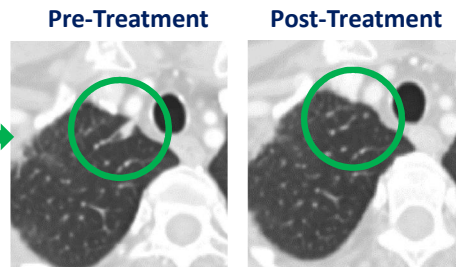
- Market Focus: **Advanced breast cancer** (the cause of >40,000 deaths in the U.S. per annum)
- BriaCell utilizes an **immunotherapy** approach → a type of cancer treatment that boosts the body's own cancer-fighting cells to destroy cancerous tumors
- Bria-IMT™** produces antigens (proteins made by breast cancer cells), which are 'presented' to CD4+ and CD8+ T-cells (cells known for tumor destruction). Direct stimulation of T-cells (unique to Bria-IMT™) and secretion of GM-CSF proteins further boosts immune response.



- Bria-IMT™ Phase I/IIa** clinical trial completed December 2018; Outstanding safety & efficacy

Patients	HLA Match	Tumor Shrinkage	Biological Response*
N=5	≥ 2	40%	60%
N=19	≥ 1	21%	37%
N=8	0	0%	0%

*Biological response includes tumor shrinkage or lower circulating cancer associated cells



- Bria-IMT™ combined with KEYTRUDA® (Merck)** → Findings support BriaCell's hypothesis: KEYTRUDA® acts by "awakening" a component of the immune system, while Bria-IMT™ "puts the foot on the gas" of the immune system, leading to more powerful anti-cancer activity.
- Incyte Corporation** → Non-exclusive clinical trial collaboration to evaluate the effects of Bria-IMT™ in combination with Incyte's selected compounds for advanced breast cancer
- Developing Bria-OTS™**, an "Off-The-Shelf Personalized" immunotherapy tailored to each patient based on a simple identification test
- CEO Dr. William Williams and his team have been involved in dozens of drug approvals





BriaCell Therapeutics Corp.
 BCT-TSXV • BCTXF-US

Recent Corporate Activity

A substantial shift in corporate strategy has led to 5 transformational developments:

- **April 3, 2019:** KEYTRUDA® combination study efficacy results → rapid additive or synergistic anti-tumor activity



- **April 2, 2019:** Incyte (INCY-N) / BriaCell clinical trial collaboration & supply agreement



- **April 1, 2019:** \$3mm private placement closed into treasury
- **March 18, 2019:** New board members (Taub, Embro-Pantalony) & chairman (Bondarenko)
- **February 26, 2019:** Bondarenko became largest shareholder (15.2%) -- spearheading a significant shift in capital markets strategy

Key Metrics:

Recent Share Price (C\$)	\$0.06
Basic Shares Out (MM)	196.4
Basic Market Cap (C\$MM)	\$11.8
April 2019 PP (C\$MM)	\$3.0
Insider Ownership	28.3%

Leadership:

William V. Williams, MD, FACP, President & CEO, Director

- **Notable Affiliations:** Incyte Corporation, GlaxoSmithKline, University of Pennsylvania

Charles Wiseman, MD, Co-Founder & Director

- **Notable Affiliations:** St. Vincent Medical Center, University of Texas MD Anderson Hospital & Tumour Institute, Keck-USC School of Medicine

Markus Lacher, PhD, Senior Director, R&D

- **Notable Affiliations:** T cell Therapeutics, Inc., Cesca Therapeutics, Inc., BioTime, Inc., OncoCyte Corporation

Brian Metcalf, Ph.D., Scientific Advisory Board

- **Notable Affiliations:** Incyte Corporation, SmithKline Beecham

Jamieson Bondarenko, CFA, CMT, Chairman

- **Notable Affiliations:** Lexaria Bioscience Corp., MustGrow Biologics Corp., Eight Capital, Dundee Securities, HSBC

Rebecca A. Taub, M.D., Director

- **Notable Affiliations:** Madrigal Pharmaceuticals, Hoffmann-La Roche Company, Bristol-Myers Squibb, Dupont Pharmaceuticals

Vaughn Embro-Pantalony, MBA, FCPA, FCMA, CDir, ACC, Director

- **Notable Affiliations:** Soricimed Biopharma Inc., Microbix Biosystems Inc., Teva Novopharm, Bayer, Zeneca Pharma

Richard J. Berman, JD, MBA, , Director

- **Notable Affiliations:** Advaxis, Cryoport, BioVie Inc., Immuron, Cevolva Biotech, Microbix Biosystems, MetaStat, Nexmed Inc. (Apricus Biosciences, Inc), Internet Commerce Corporation (Easylink Services), Catasys, Inc.

<http://briacell.com/>



BriaCell Therapeutics Corp.
BCT-TSXV • BCTXF-US

Forward Looking Statements

BriaCell Therapeutics Corp. (“**BriaCell**”)

Except for historical information, this presentation contains forward-looking statements, which reflect BriaCell’s current expectations regarding future events. These forward-looking statements involve known and unknown risks and uncertainties that could cause BriaCell’s actual results to differ materially from those statements. Those risks and uncertainties include, but are not limited to, our ability to access capital, the successful and timely completion of clinical trials, the receipt of all regulatory approvals and other risks detailed from time to time in our ongoing quarterly and annual filings. The forward-looking statements in this presentation are also based on a number of assumptions which may prove to be incorrect.

Forward-looking statements contained in this presentation represent views only as of the date of this presentation and are presented for the purpose of assisting potential investors in understanding BriaCell’s business, and may not be appropriate for other purposes. BriaCell does not undertake to update forward-looking statements, whether written or oral, that may be made from time to time by or on its behalf, except as required under applicable securities legislation.

Investors are cautioned not to rely on these forward-looking statements and are encouraged to read BriaCell’s continuous disclosure documents, including its financial statements which are available on SEDAR at www.sedar.com.

<http://briacell.com/>